



Update tool for DP-DS620 Firmware Ver. 4.52

Firmware Update Procedure

April 1, 2025

Dai Nippon Printing Co., Ltd.

-  After updating to Ver. 4.52, set up the roll paper again and perform "Paper Initialization".
-  While updating, do not disconnect the USB cable or turn the power off. Do not perform any operations such that could result in an error, such as opening the printer cover. Also, do not start or run other software at the same time.

This is an explanation for the DP-DS620 Version Up Tool, to update the printer's firmware Ver. 4.52.

This update tool can be used for the following OS.

Windows 11 (64bit), Windows 10 (32bit/64bit)

1. Running DP-DS620 Version Up Tool


To begin with, turn on the printer and connect it to the host computer with the USB cable.
Close the printer cover, and make sure it is idle, paper end, or ribbon end.

Run the DP-DS620 Version Up Tool execute file (DP-DS620_0452x86_Direct.exe) for 32bit OS.

Or,

Run the DP-DS620 Version Up Tool execute file (DP-DS620_0452x64_Direct.exe) for 64bit OS.

 If the error window is displayed, see Appendix A-1 or A-2.

 If the Printer setting window is displayed, see Appendix A-3.

A confirmation screen that allows you to run this software may appear. In that case, please allow it.

2. Starting the Update

On the DP-DS620 Version Up Tool window, click the “START” button to begin the update.

The screenshot shows the 'DP-DS620 Version Up Tool' window. At the top, 'New Firmware Ver' is set to 'DS620 04.52' and 'Printer Firm Ver' is 'DS620 04.51'. Below this is a table of firmware components with checkboxes and sum values:

Component	Check	File Name	Sum
SD CWD Ver 300	<input checked="" type="checkbox"/>	DS620_SD_300_0111.CWD	28B7
SD CWD Ver 600	<input checked="" type="checkbox"/>	DS620_SD_600_0111.CWD	FD22
SD CWD Ver Slow	<input checked="" type="checkbox"/>	DS620_SD_610_0111.CWD	5479
PD CWD Ver 300	<input checked="" type="checkbox"/>	DS620_PD_300_0111.CWD	28B8
PD CWD Ver 600	<input checked="" type="checkbox"/>	DS620_PD_600_0111.CWD	FD23
PD CWD Ver Slow	<input checked="" type="checkbox"/>	DS620_PD_610_0111.CWD	547A

Below the table, a message says '** Firmware Update ** Push START button.' There are two buttons: 'START' and 'END'. A 'Status' section has five checkboxes, all of which are currently unchecked:

- ☐ Transmitting data is prepared.
- ☐ The printer changes to the rewrite mode.
- ☐ Firmware is transmitted.
- ☐ Firmware is written in flash ROM.
- ☐ CWD data is transmitted and written.

A 'CAUTION' note at the bottom states: 'While updating, do not disconnect the USB cable or turn the power off. Do not perform any operations such that could result in an error, such as opening the printer cover. Also, do not start or run other software at the same time.'

IF If the DP-DS620 occurs any error, the error message is displayed. See Appendix A-4.

When you click “START” and start the update, the window display will change to the following, and you can check the update progress status.

This screenshot shows the same 'DP-DS620 Version Up Tool' window after the update has started. The 'START' button is now disabled. In the 'Status' section, the first two checkboxes are now checked:

- ☒ Transmitting data is prepared.
- ☒ The printer changes to the rewrite mode.
- ☐ Firmware is transmitted.
- ☐ Firmware is written in flash ROM.
- ☐ CWD data is transmitted and written.

Below the status checkboxes, there is a progress bar consisting of four blue squares, indicating the progress of the update. The 'CAUTION' note remains at the bottom.

! Notice !

While updating, do not disconnect the USB cable or turn the power off.
Do not perform any operations such that could result in an error, such as opening the printer cover.
Also, do not start or run other software at the same time.

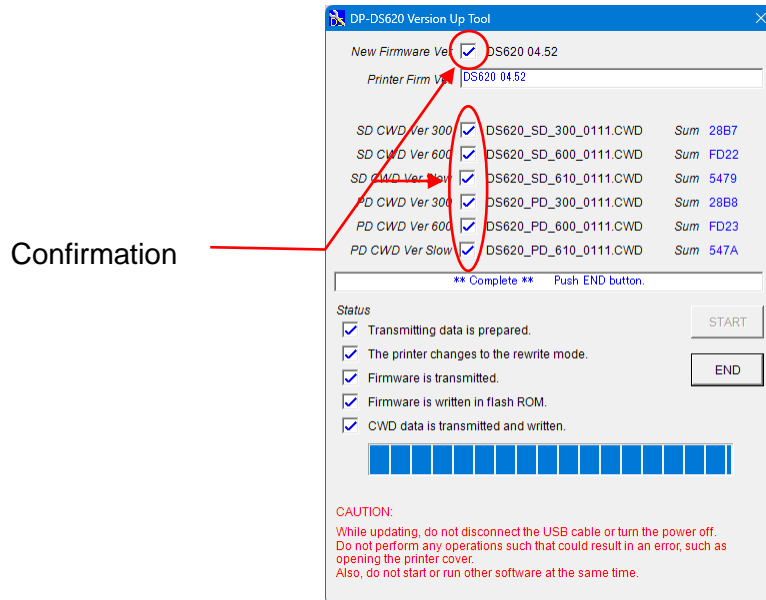
When the printer enters the rewrite mode, the LED will change from green to flashing green.
(The printer buzzer sounds during the update, but it is normal status.)

3. Finishing the update

When all the updates are complete, the window display will look like the following.

Also, the printer LED will revert from flashing green to green.

Confirm the New Firmware and New CWD Ver boxes are checked, and click the “END” button or close the window to end DP-DS620 Version Up Tool.



When all the updates are completed, reboot the host computer.

When the host computer is not rebooted, the new function might not be able to be used.

4. Perform “Paper Initialization” of the DP-DS620

Reload the paper with the power on to adjust the ribbon sensor balance.

The copyrights for this document are the property of the holders of rights.

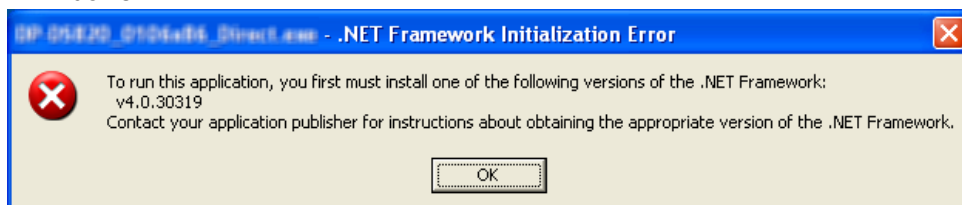
The contents of this document may be changed without prior notice.

Note: Windows is a trademark or registered trademark of Microsoft Corporation in the U.S. and/or other countries.

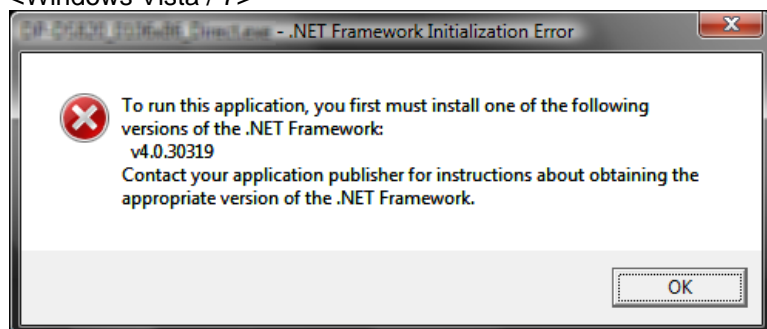
Appendix A

1. If .NET Framework is not installed in the host computer, error messages are displayed.
For supporting 32/64bit OS, this Version Up Tool is an application which use .NET Framework. When the start of this tool by XP/Vista/7 and the following message are displayed, it is necessary to install Microsoft .NET Framework. (In Windows 8 and later, the .NET Framework 4 is installed by the standard.)

<Windows XP>



<Windows Vista / 7>

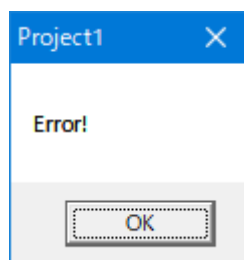


.NET Framework can be downloaded from following URL. The version that can be used is different depending on each OS. Details are described in URL. (This URL is a thing as of April 2025)

.NET Framework 4 download (Windows XP and later)

<https://www.microsoft.com/en-us/download/details.aspx?id=17718> (English)

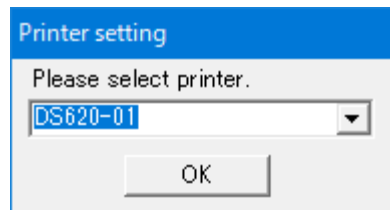
2. If there are no printer ports, the following confirmation window will open.
After checking that power is on and the USB is connected, click "OK" to start the process again.



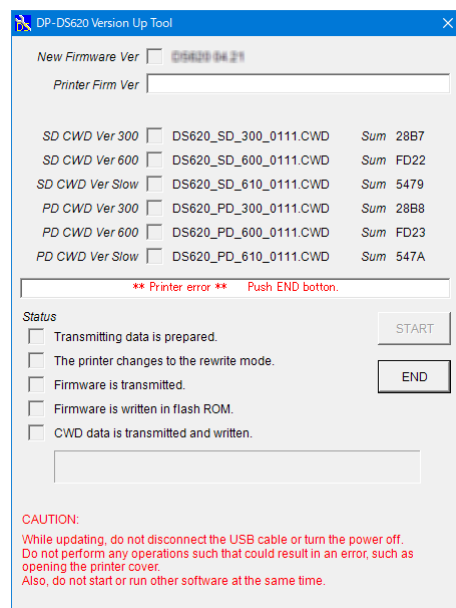
3. When running DP-DS620 Version Up Tool, if there are multiple printer ports, the following printer select window will open.

Select the DP-DS620, and click “OK”.

When updating multiple DP-DS620 units, execute them one by one.



4. When starting the update, if the printer status is anything other than idle, paper end, or ribbon end, the following printer error will be displayed. The same error will be shown if the USB cable is disconnected or the printer power is off.



If there is an error, click “END” or close the window to stop DP-DS620 Version Up Tool, be sure it is idle, paper end, or ribbon end, and run DP-DS620 Version Up Tool again.

If the USB cable was disconnected or the power was off, check that the USB cable is connected and the power is turned on.

Appendix B

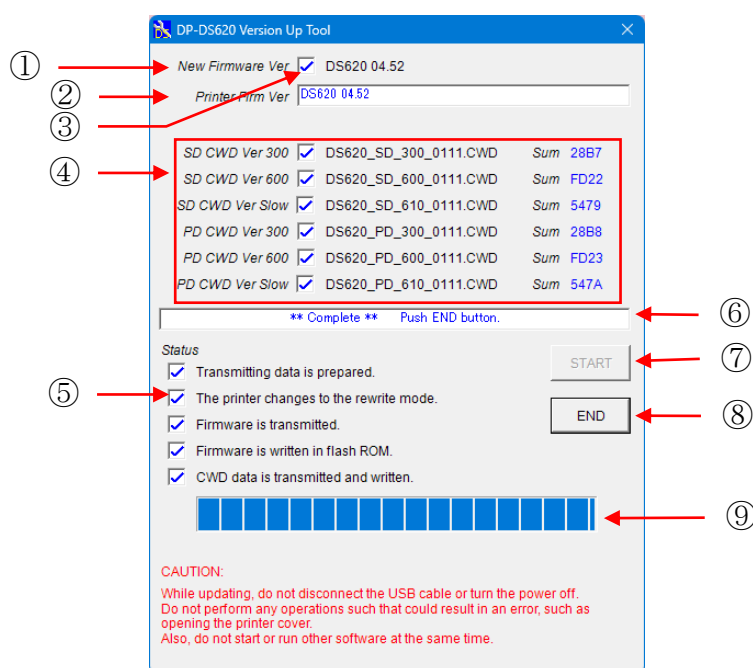
1. DP-DS620 Version Up Tool Execute File Names

The DP-DS620 Version Up Tool has a specific execute file for each version to be updated.

The execute file names provided with the DP-DS620 Version Up Tool this time, and their corresponding update firmware and color control data versions are shown below.

	For 32bit OS	For 64bit OS
DP-DS620 Version Up Tool Execute File Name	DP-DS620_0452x86_Direct.exe	DP-DS620_0452x64_Direct.exe
Firmware Version	DS620 04.52	
Color Control Data Version and Checksum	DS620_SD_300_0111.CWD 28B7 DS620_SD_600_0111.CWD FD22 DS620_SD_610_0111.CWD 5479 DS620_PD_300_0111.CWD 28B8 DS620_PD_600_0111.CWD FD23 DS620_PD_610_0111.CWD 547A	

DP-DS620 Version Up Tool Window Explanation



DP-DS620 Version Up Tool Window

- | | |
|--|---|
| ① New Firmware | This displays the new firmware version that will be used in the update. |
| ② Printer Firm Ver | This displays the printer's current firmware version.
If it differs from the new version, it will be displayed with red letters. |
| ③ Check Box | This box will have a check if the new firmware or color control data has already been written to the printer, or if the update has been completed. |
| ④ SD CWD Ver 300
SD CWD Ver 600
SD CWD Ver Slow
PD CWD Ver 300
PD CWD Ver 600
PD CWD Ver Slow | <p>This displays the new color control data version and checksum value (Sum) to be updated.
When the update is complete, the Sum value will be displayed in blue.</p> <p>SD CWD Ver 300 : CWD for Digital media 300dpi
 SD CWD Ver 600 : CWD for Digital media 600dpi
 SD CWD Ver Slow : CWD for Digital media Slow Speed
 PD CWD Ver 300 : CWD for Premium Digital media 300dpi
 PD CWD Ver 600 : CWD for Premium Digital media 600dpi
 PD CWD Ver Slow : CWD for Premium Digital media Slow Speed</p> |
| ⑤ Status | This checks the progress status for the update. |
| ⑥ Indicator | This shows the printer's current status, and the application operating command. |
| ⑦ START | Update start button
Clicking this button starts the update. |
| ⑧ END | End the update. (Disabled during updating) |
| ⑨ Status Bar | Displays the progress status for the update. |